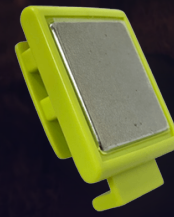




x4 UB290R (red)

x4 Rail Base

x4 Magnetic Side Clip



RAILWAY LIGHTING KIT

Introducing the Eflare Railway Lighting Kit for Rail and Transit, designed to deliver clear, visual marking during operational work and safety responses. The kit includes high-intensity LED beacons with flexible mounting options allowing personnel to deploy lighting quickly in fast-changing trackside or station environments.

Key Features

- ✓ Fast deployment for any rail-side task
- ✓ High-visibility marking for flagging and closures
- ✓ Stable performance during welding and shunting
- ✓ Boosts worker safety in low-light environments

Specifications



Light Colour	Red
Candela	70 to 85 cd
Weight Inc batteries	260g (9.18oz)
Height	20cm (8")
Flash rate	160-185 FPM
Battery type	4x AA cell (not included)
Battery life	30-40 hours

Also Available...



Compact

15cm (6")

x4 UB282R (red)

x4 Road Base

x4 Cone Clip



Extended Battery

80+ hours

x4 UB720R (red)

x4 Road Base

x4 Cone Clip

Providing exceptional visibility and adaptable deployment, the Eflare Railway Lighting Kit ensures quick, effective, and secure lighting zones, supporting workers and helping to protect the public